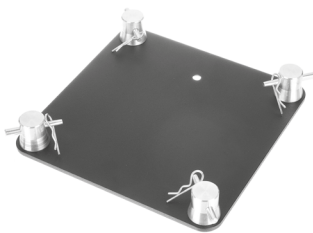
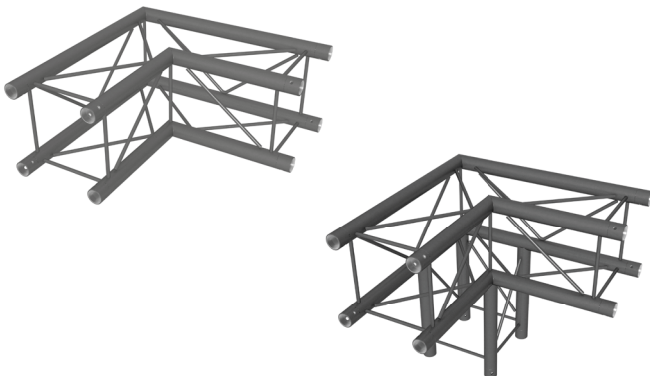


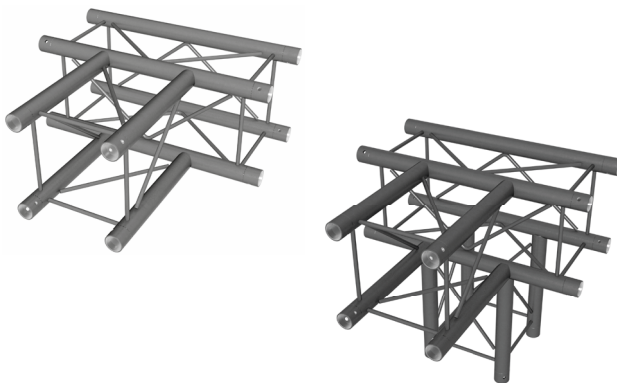
- 4-point Deco Truss
- perfect for shop fitting or decoration of clubs, bars, etc.
- with conical connector set
- Diameter main tube: 35 mm
- Wall thickness main tube: 1.5 mm
- Outer distance main tube: 220 mm
- Diameter brace: 8 mm
- Material: aluminium EN AW 6060 T6
- Colour: black
- Length: 50 cm (item no. 485880 DT24B-050 Deco Truss)
- 100 cm (item no. 485882 DT24B-100 Deco Truss)
- 150 cm (item no. 485886 DT24B-150 Deco Truss)
- 200 cm (item no. 485888 DT24B-200 Deco Truss)
- 250 cm (item no. 485891 DT24B-250 Deco Truss)
- 300 cm (item no. 485893 DT24B-300 Deco Truss)
- Weight: 2.0 kg (item no. 485880 DT24B-050 Deco Truss)
- 3.8 kg (item no. 485882 DT24B-100 Deco Truss)
- 5.8 kg (item no. 485886 DT24B-150 Deco Truss)
- 6.3 kg (item no. 485888 DT24B-200 Deco Truss)
- 7.5 kg (item no. 485891 DT24B-250 Deco Truss)
- 8.8 kg (item no. 485893 DT24B-300 Deco Truss)



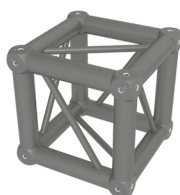
- DT24B-BP Deco Truss Base Plate (item no. 485902)
- Base plate for Stageworx DT24 Deco Truss system
- perfect for shop fitting or decoration of clubs, bars, etc.
- with four half cones, four bolts and four R-clips
- Material: aluminium EN AW 5754-H111
- Colour: black
- Dimensions (W × H × D): 220 mm × 5 mm × 220 mm
- Weight: 0.88 kg



- 4-point Deco Truss
- 2-way corner 90° (item no. 485904 DT24B-C21 Deco Truss Corner)
- 3-way corner 90° (item no. 485911 DT24B-C30 Deco Truss Corner)
- perfect for shop fitting or decoration of clubs, bars, etc.
- with conical connector set
- Diameter main tube: 35 mm
- Wall thickness main tube: 1.5 mm
- Outer distance main tube: 220 mm
- Diameter brace: 8 mm
- Material: aluminium EN AW 6060 T6
- Colour: black
- Dimensions (W × H × D): 500 mm × 500 mm × 220 mm (item no. 485904 DT24B-C21 Deco Truss Corner)
- 500 mm × 500 mm × 500 mm (item no. 485911 DT24B-C30 Deco Truss Corner)
- Weight: 2.3 kg (item no. 485904 DT24B-C21 Deco Truss Corner)
- 2.8 kg (item no. 485911 DT24B-C30 Deco Truss Corner)



- 4-point Deco Truss
- 3-way T-piece (item no. 485914 DT24B-T35 Deco Truss T-piece)
- 4-way T-piece (item no. 485919 DT24B-T40 Deco Truss T-piece)
- perfect for shop fitting or decoration of clubs, bars, etc.
- with conical connector set
- Diameter main tube: 35 mm
- Wall thickness main tube: 1.5 mm
- Outer distance main tube: 220 mm
- Diameter brace: 8 mm
- Material: aluminium EN AW 6060 T6
- Colour: black
- Dimensions (W × H × D): 500 mm × 500 mm × 220 mm (item no. 485914 DT24B-T35 Deco Truss T-piece)
- 500 mm × 500 mm × 500 mm (item no. 485919 DT24B-T40 Deco Truss T-piece)
- Weight: 3.9 kg (item no. 485914 DT24B-T35 Deco Truss T-piece)
- 4.5 kg (item no. 485919 DT24B-T40 Deco Truss T-piece)



- 4-point Deco Truss (item no. 452656 DT24B-Box Deco Truss Box)
- perfect for shop fitting or decoration of clubs, bars, etc.
- with conical connector set
- Diameter main tube: 35 mm
- Wall thickness main tube: 1.5 mm
- Outer distance main tube: 220 mm
- Diameter brace: 8 mm
- Material: aluminium EN AW 6060 T6
- Colour: black
- Dimensions (W × H × D): 220 mm × 220 mm × 220 mm
- Weight: 3.8 kg

Accessories

- DT2-BPHC Deco Truss Half Cone Base Plate (item no. 485855) ▪ DT2-HC Deco Truss Half Cone Corner Box (item no. 485860) ▪ DT2-R Deco Truss R-Clip 100 pcs. (item no. 485865)
- DT2-CC Deco Truss Connector (item no. 485857) ▪ DT2-P Deco Truss Pin 10 pcs. (item no. 485863) ▪ DT2-R Deco Truss R-Clip 10 pcs. (item no. 485868)

Load table

Span	Uniformly distributed load	Deflection	Centre point load	Deflection	Third point load	Deflection	Quarter point load	Deflection	5th point load	Deflection
	kg/m	mm	kg	mm	kg (x2)	mm	kg (x3)	mm	kg (x4)	mm
2	219.5	1.2	439.1	1.9	219.5	1.6	146.4	1.5	109.8	1.4
3	145.4	4.0	334.6	4.9	218.2	5.4	145.4	5.0	109.1	4.8
4	108.4	9.5	248.5	8.7	185.0	11.0	124.3	10.3	103.6	10.9
5	78.5	16.9	196.4	13.7	147.3	17.3	98.2	16.1	81.8	17.1
6	53.7	24.4	161.1	19.8	120.8	25.0	80.6	23.3	67.1	24.6
7	38.7	33.3	135.5	27.2	101.7	34.0	67.8	31.8	56.5	33.6
8	29.0	43.6	116.0	35.7	87.0	44.5	58.0	41.7	48.3	44.0
9	22.3	55.4	100.5	45.6	75.4	56.4	50.3	52.9	41.9	55.8
10	17.6	68.5	87.9	56.9	65.9	69.8	43.9	65.6	36.6	69.0

The selfweight of the truss is considered in the load table.



The truss system is used for stable mounting of spotlights for decoration purposes. Any other use or use under other operating conditions is considered to be improper and may result in personal injury or property damage. No liability will be assumed for damages resulting from improper use. This product may be used only by persons with sufficient physical, sensorial, and intellectual abilities and having corresponding knowledge and experience. Other persons may use this device only if they are supervised or instructed by a person who is responsible for their safety.

Ensure that plastic bags, packaging, etc. are properly disposed of and are not in the reach of babies and young children. Choking hazard!

The mounting of the truss system may only be carried out by qualified and competent experts. Observe the locally applicable regulations. Depending on the site (club, exhibition booth), observe the valid mounting regulations applicable on the particular site. All constructional components must be subjected to a visual inspection before assembly begins.

When falling off an unsuitable climbing assistance, you could be injured or be caught by falling objects. Use a suitable working platform or a sturdy ladder for mounting the truss system or the spotlights. Place the working platform or the ladder on a flat and stable ground.



When the truss system is installed on soft or uneven ground, the truss system may tip over and cause injuries and property damage. Install the truss system only on even and solid surfaces and use only suitable securing material (for example steel ropes).

Use only suitable and sufficiently dimensioned mounting material and stands for the mounting.

Depending on the use, it may be necessary to install additional and independent securing systems using only sufficiently dimensioned mounting material.

In case of excessive or one-sided loading, the load carrying capacity of the truss system may be affected, causing injury and property damage. Never exceed the specified maximum load for the truss.



For the packaging, environmentally friendly materials have been chosen that can be supplied to normal recycling. Ensure that plastic bags, packaging, etc. are properly disposed of. Do not just dispose of these materials with your normal household waste, but make sure that they are collected for recycling. Please follow the notes and markings on the packaging.