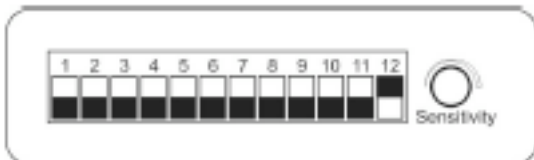


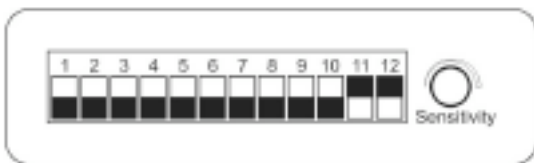
**User Manual / Instructions**

**1. Sound Action Mode**



Set dipswitch 12 to ON. The LED PAR is controlled by music beat. With every music beat another color is shown. Sensitivity may be adjusted with the potentiometer.

**2. Mix Color Mode**

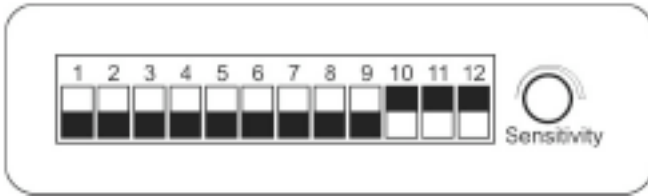


Set dipswitch 11 and 12 to ON. The LED PAR is in fading mode. Set dipswitch 1 to ON, the fading time is 2,5s.

The Fade-Time is set by dipswitches 1 to 9. The time is added.

DIP 1	DIP 2	DIP 3	DIP 4	DIP 5	DIP 6
2,5s	5s	7,5s	10s	15s	20s
DIP 7	DIP 8	DIP 9	DIP 9	DIP1 to DIP 9 are OFF	
40s	80s	160s	320s	640s	

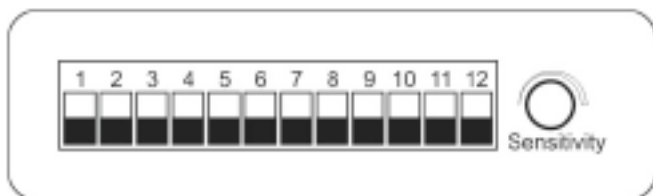
### 3. Manual Mode



Set dipswitch 10, 11 and 12 to ON, the unit is in manual mode. In manual mode, the colour brightness may be set according to this table:










RED	DIP 1,2	OFF/ OFF	OFF/ON	ON/OFF	ON/ON
GREEN	DIP 3,4				
BLUE	DIP 5,6				
Brightness		0	25%	50%	100%

### 4. DMX Mode



Set dipswitch 10, 11, and 12 to OFF. The unit is in DMX mode and may be controlled by any DMX controller.

The DMX channels may be set by dipswitches 1 to 9, in the range of DMX channel 1 to 507. Dipswitch 1 is first channel. Dipswitch 9 is channel 256.

- Dip 1  x 1
- Dip 2  x 2
- Dip 3  x 4
- Dip 4  x 8
- Dip 5  x 16
- Dip 6  x 32
- Dip 7  x 64
- Dip 8  x 128
- Dip 9  x 256

The channel usage is according to this table:

CH-1	CH-2	CH-3	CH-4	CH-5	CH-6	CH-7
RED	GREEN	BLUE	MACRO	Speed/Strobe	MODE	Master DIM
0 = OFF	0 = OFF	0 = OFF	0-15 Macro Off	0-15 = OFF	0 - 31 = Color Setting	0-255
1 - 255 = DIM	1 - 255 = DIM	1 - 255 = DIM		16-255 = Strobe 16 Steps of Speed		
0-15 = OFF	0-15 = OFF	0-15 = OFF		0-255 Speed	32-63 = Fade Out	
16- 255 = ON	16-255 = ON	16-255 = ON			64-95 = Fade In	
0-15 = OFF	0-15 = OFF	0-15 = OFF			96-127 = Fade In Out	
16- 255 = ON	16-255 = ON	16-255 = ON			128-159 = Auto Mix	
0-15 = OFF	0-15 = OFF	0-15 = OFF			160-191 = 3 Colour Chase	
16- 255 = ON	16-255 = ON	16-255 = ON			192-223 = 7 Colour Chase	
NA	NA	NA			NA	
				8-255 = Macro 31 Steps of Macro	16-255 = Strobe 16 Steps of Speed	

all Copyrights by:  
Musikhaus Thomann  
Treppendorf 30  
GER- 96138 Burgebrach  
Tel.: +49/9546/9223-0  
[info@thomann.de](mailto:info@thomann.de)  
[www.thomann.de](http://www.thomann.de)