

ROLLS

PS16 POWER CENTER Personal Monitor Power Supply Signal Distribution



READ THIS MANUAL FOR IMPORTANT OPERATION INSTRUCTION. TIP-RING-SLEEVE PLUGS ARE REQUIRED FOR THE OUTPUTS OF THIS UNIT.

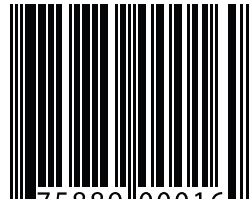
Owners Manual

PS16 POWER CENTER

The PS16 supplies the DC power and distributes the Monitor signal to up to ten of the PM50s, the PM55, and the PM351 units. This dramatically increases efficiency and eliminates the need for multiple wall-warts and adapter cables.

- Supplies power for up to ten PM50s, PM55, and PM351 units.
- Directly supplies a monitor signal to the above listed units.
- Unbalanced 1/4" and TRANS FORMER-balanced XLR inputs.

PS16 PM Power Center



ROLLS

Rolls Corporation
Salt Lake City, UT
12/10



INTRODUCTION

Thank you for your purchase of the PS16 Personal Monitor Power Center. The PS16 supplies the DC power and distributes the Monitor signal to up to ten of the PM50s, the PM55, and the PM351 units. This dramatically increases efficiency and eliminates the need for multiple wall-warts and adapter cables.

The power AND monitor signal are carried from each PS16 output using an ordinary 1/4" stereo cable to the Monitor input of the PM50s, 55, and 351. Using stereo "Y" adapters, up to ten of the Personal Monitor Amplifiers may be daisy-chained.

NOTE: Very old PM50s and PM50sob units may not work with a PS16.

Any PM50s or PM50sob WITHOUT a ground lift jumper and mono/stereo jumper will not work with a PS16.

FEATURES

- Supplies power for up to ten PM50s, PM55, and PM351 units.
- Directly supplies a monitor signal to four of the above units, indirectly (by using stereo "Y" adapters) will provide signal for up to ten units.
- Unbalanced 1/4" and TRANSFORMER-balanced XLR inputs.

DESCRIPTION

LINE INPUTS

UNBALANCED: 1/4" Tip-Sleeve jack. Connects to a mixer's unbalanced Monitor or Auxiliary Send.

BALANCED: Transformer isolated female XLR jack. Connects to a mixer's balanced Monitor or Auxiliary Send.
12VAC: Connects to the included Rolls PS12 power adapter.

OUT 1 - 4: 1/4" Tip-Ring-Sleeve jacks. The Tip of the connector contains the audio signal, the Ring has the 12 volts DC required to operate the Personal Monitor devices, and the Sleeve connects to ground.



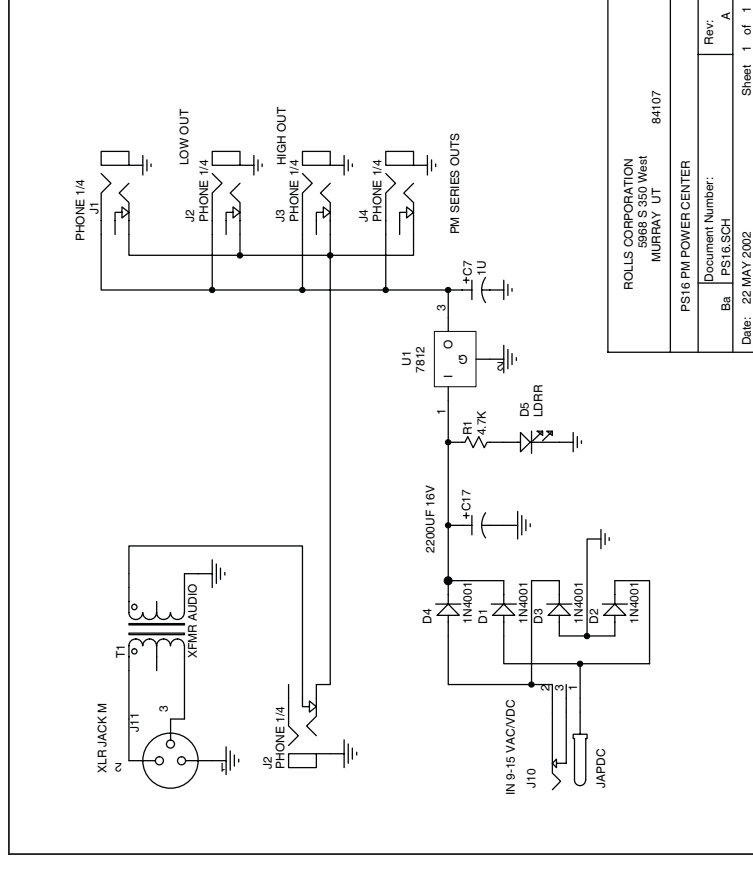
CONNECTION / OPERATION

- Connect the Send of the mixer to the appropriate Input of the PS16 (balanced or unbalanced).
- Connect the PS12 adapter to the VAC input of the PS16. The Power/Status LED should light. If not, immediately unplug the power as this indicates a short from the Ring of an Output jack to ground.
- Connect the TIP-RING-SLEEVE STEREO cables from the PS16 Outputs to the PM series Monitor Inputs. Refer to the Personal Monitor unit owners manual for proper operation of that unit.

SPECIFICATIONS

Input Power: VAC
 Output Power: 12 VDC on the Ring terminal of each OUT jack.
 Size: 3.125" x 3.125" x 1.25"
 Weight: 1 lb (.45 Kg)

SCHEMATIC



ROLLS CORPORATION
 6968 S 350 West
 MURRAY UT 84107

PS16 PM POWER CENTER
 Document Number:
 Ba. PS16.SCH
 Rev: A

Date: 22/MAY/2002
 Sheet 1 of 1