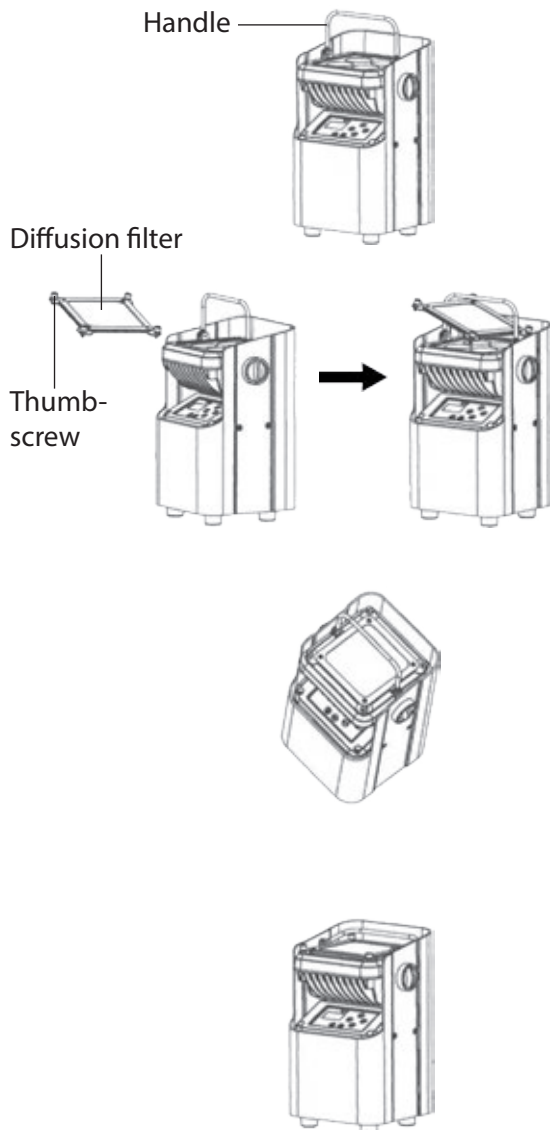


- ✓ Diffusion filter 40°, suitable for Ignition WAL-L412 RGBW Battery Light
- ✓ Compatible with article # 461723



### Assembly Instructions

1. Disconnect the device from the power supply and fold the carrying handle upwards.
2. Move the diffusion filter through the carrying handle with the hand screws pointing upwards.
3. Then align the diffusion filter with the hand screws over the threaded holes on the unit. Tighten the 4 hand screws.
4. Fold the carrying handle back down. Installation is complete.

This device is intended to be used as a 40° diffusion filter for suitable Ignition devices. Any other use or use under other operating conditions is considered to be improper and may result in personal injury or property damage. No liability will be assumed for damages resulting from improper use.



Ensure that plastic bags, packaging, etc. are properly disposed of and are not in the reach of babies and young children. Choking hazard! Ensure that children do not detach any small parts (e.g. knobs or the like) from the product. They could swallow the pieces and choke! Never let children use electrical devices unattended.



For the transport and protective packaging, environmentally friendly materials have been chosen that can be supplied to normal recycling. Ensure that plastic bags, packaging, etc. are properly disposed of. Do not just dispose of these materials with your normal household waste, but make sure that they are collected for recycling. Please follow the notes and markings on the packaging.