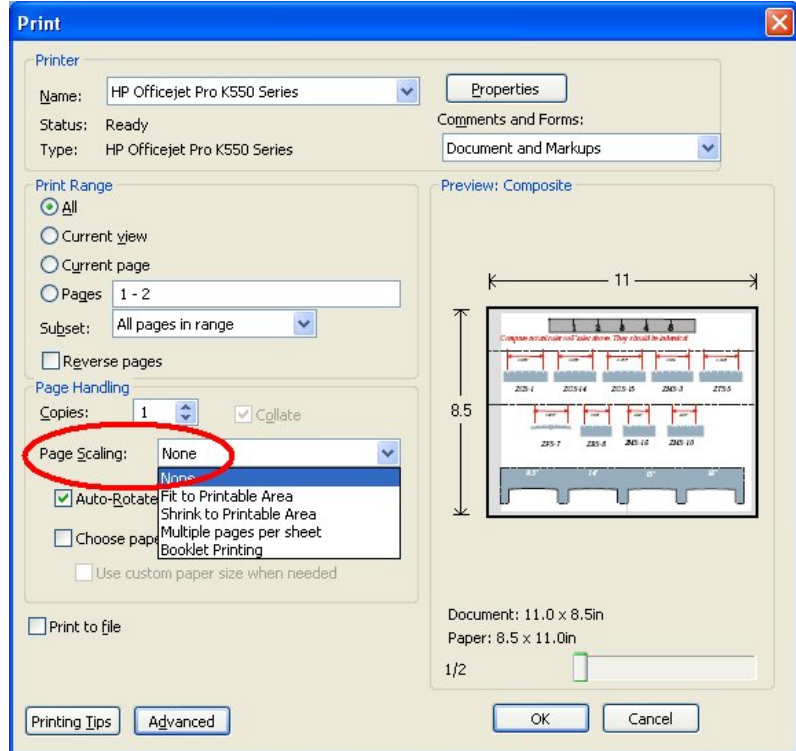
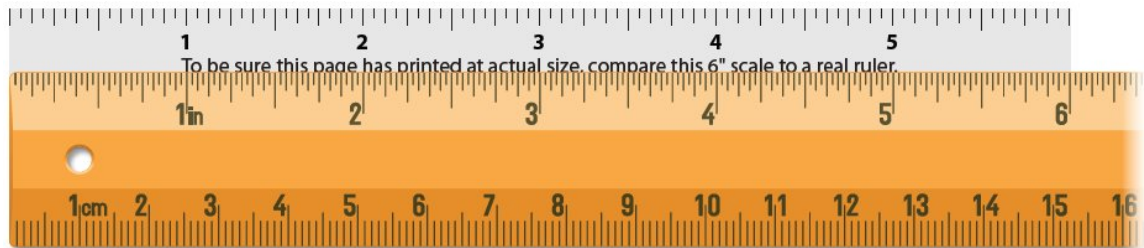


Sizing Guide for Zero Glide Nuts

1. In order for the sizing guide to work, it must be printed at full size! Your printer's settings may need to be adjusted to do this. Printer dialogue boxes (like the one shown at right) vary from one printer to another, but look for an option to print at "100%," or "Actual Size." Do not select options such as, "Shrink to Fit," or "Fit to Printable Area."



2. Compare the ruler at the top of the sizing guide to an actual ruler. They should match:



3. Compare the correctly sized printout to your nut. The red lines indicate the distance from the center of the outside string slots.

