



swiSonic

Basic Router
router

Musikhaus Thomann
Thomann GmbH
Hans-Thomann-Straße 1
96138 Burgebrach
Germany
Telephone: +49 (0) 9546 9223-0
E-mail: info@thomann.de
Internet: www.thomann.de

15.02.2019, ID: 427045 (V2)

Table of contents

1	General information	4
	1.1 Further information.....	5
	1.2 Notational conventions.....	6
	1.3 Symbols and signal words.....	7
2	Safety instructions	9
3	Features	14
4	Installation and starting up	15
5	Connections and controls	27
6	Cleaning	31
7	Troubleshooting	32
8	Technical specifications	33
9	Protecting the environment	35

1 General information

This user manual contains important information on the safe operation of the device. Read and follow all safety notes and all instructions. Save this manual for future reference. Make sure that it is available to all persons using this device. If you sell the device to another user, be sure that they also receive this manual.

Our products and user manuals are subject to a process of continuous development. We therefore reserve the right to make changes without notice. Please refer to the latest version of the user manual which is ready for download under www.thomann.de.

1.1 Further information

On our website (www.thomann.de) you will find lots of further information and details on the following points:

Download	This manual is also available as PDF file for you to download.
Keyword search	Use the search function in the electronic version to find the topics of interest for you quickly.
Online guides	Our online guides provide detailed information on technical basics and terms.
Personal consultation	For personal consultation please contact our technical hotline.
Service	If you have any problems with the device the customer service will gladly assist you.

1.2 Notational conventions

This manual uses the following notational conventions:

Letterings

The letterings for connectors and controls are marked by square brackets and italics.

Examples: *[VOLUME]* control, *[Mono]* button.

Displays

Texts and values displayed on the device are marked by quotation marks and italics.

Examples: *'24ch'*, *'OFF'*.

Text input

Text inputs that are carried out on the device are indicated by typewriter font.

Example: 2323

Instructions



The individual steps of an instruction are numbered consecutively. The result of a step is indented and highlighted by an arrow.

Example:

1. ▶ Switch on the device.
2. ▶ Press *[Auto]*.
 - ⇒ Automatic operation is started.
3. ▶ Switch off the device.

1.3 Symbols and signal words

In this section you will find an overview of the meaning of symbols and signal words that are used in this manual.

Signal word	Meaning
DANGER!	This combination of symbol and signal word indicates an immediate dangerous situation that will result in death or serious injury if it is not avoided.
NOTICE!	This combination of symbol and signal word indicates a possible dangerous situation that can result in material and environmental damage if it is not avoided.
Warning signs	Type of danger
	Warning – high-voltage.
	Warning – danger zone.

2 Safety instructions

Intended use

This device is used to wirelessly connect Wi-Fi-enabled devices to each other to form a wireless local area network or to connect to the Internet. Use the device only as described in this user manual. Any other use or use under other operating conditions is considered to be improper and may result in personal injury or property damage. No liability will be assumed for damages resulting from improper use.

This device may be used only by persons with sufficient physical, sensorial, and intellectual abilities and having corresponding knowledge and experience. Other persons may use this device only if they are supervised or instructed by a person who is responsible for their safety.



DANGER!

Danger for children

Ensure that plastic bags, packaging, etc. are disposed of properly and are not within reach of babies and young children. Choking hazard!

Ensure that children do not detach any small parts (e.g. knobs or the like) from the unit. They could swallow the pieces and choke!

Never let children unattended use electrical devices.



DANGER!

Electric shock caused by high voltages inside

Within the device there are areas where high voltages may be present. Never remove any covers.

There are no user-serviceable parts inside.

Do not use the device if covers, protectors or optical components are missing or damaged.



NOTICE!

Risk of fire

Do not block areas of ventilation. Do not install the device near any direct heat source. Keep the device away from naked flames.



NOTICE!

External power supply

The device is powered by an external power supply. Before connecting the external power supply, ensure that the input voltage (AC outlet) matches the voltage rating of the device and that the AC outlet is protected by a residual current circuit breaker. Failure to do so could result in damage to the device and possibly the user.

Unplug the external power supply before electrical storms occur and when the device is unused for long periods of time to reduce the risk of electric shock or fire.



NOTICE!

Operating conditions

This device has been designed for indoor use only. To prevent damage, never expose the device to any liquid or moisture. Avoid direct sunlight, heavy dirt, and strong vibrations.



NOTICE!

Possible staining

The plasticiser contained in the rubber feet of this product may possibly react with the coating of your parquet, linoleum, laminate or PVC floor and after some time cause permanent dark stains.

In case of doubt, do not put the rubber feet directly on the floor, but use felt-pad floor protectors or a carpet.



NOTICE!

Radio interference

This device emits electromagnetic signals. This can cause interference due to overlapping radio waves. Do not use the device in locations where the use of wireless devices is prohibited.



NOTICE!

Locations subject to explosion hazards

This device emits electromagnetic signals. Under unfavourable conditions, radio waves near explosive spots can cause fire or explosions. Do not use the unit near locations subject to explosion hazards.

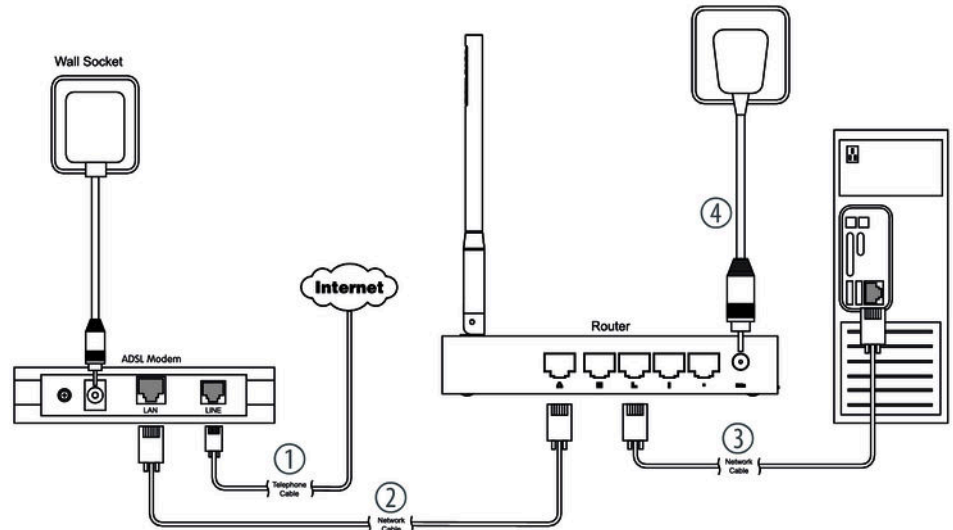
3 Features

- Wireless Dual Band Router (2.4 and 5 GHz)
- 4 operation modes: Router, Repeater (Extender), Access Point, wireless ISP
- 1 WAN port
- 4 LAN ports
- Suitable power adapter and network cable included

4 Installation and starting up

Unpack and check carefully there is no transportation damage before using the unit. Keep the equipment packaging. To fully protect the product against vibration, dust and moisture during transportation or storage use the original packaging or your own packaging material suitable for transport or storage, respectively.

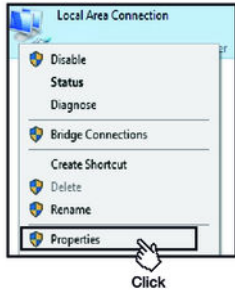
Connect the router



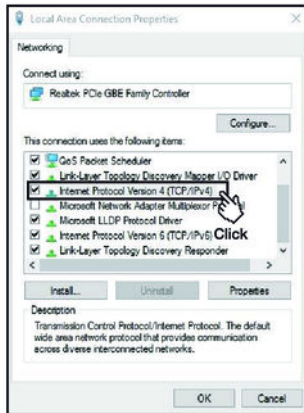
1. ➤ If you want to use the device with an existing DSL connection, connect the WAN connector of the router to the provided port at the DSL point of interconnection.
2. ➤ Configure the router as follows: Connect the LAN connector of the device via an Ethernet network cable to your PC.

- 3.** ▶ Connect the device to the power supply with the power adapter.
 - ⇒ The device is now operational.

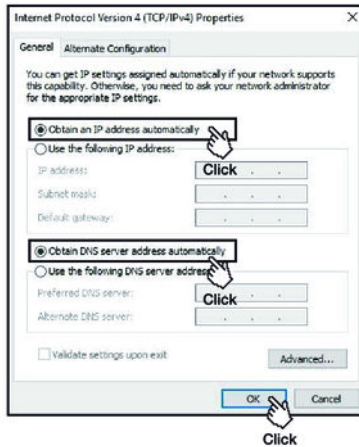
Set up WLAN at the PC (operating system Windows 10)



1. ▶ Start your PC.
2. ▶ Click the Windows start button and select 'All Apps'.
3. ▶ Click 'Windows System → Control Panel → Network and Internet → Network and Sharing Center' and select 'Change adapter settings'.
4. ▶ Right-click on the displayed internet connection and select 'Settings'.



5. Double-click the 'Internet protocol version 4 (TCP IPv4)'.



6. ➤ Select the options *'Obtain IP address automatically'* and *'Obtain DNS server address automatically'*

7. ➤ Confirm the selection with *'OK'*.

⇒ The WLAN connection is now set up at the PC.

Set up WLAN at the router



User Login
The server 192.168.1.1 requires a username and password

User Name: admin

Password: ****

LOGIN Click

Easy Setup
The easy way to get the router to work is to use the wizard. You can also use the advanced settings.

Current Status: **Good** (IP Address of Server: 192.168.1.1)

Router Settings
WAN Access Type: **DHCP Client**

5G WLAN Settings
SSID name: **5G WLAN**
SSID: **BasicRouter 5G**
Frequency: **5GHz**

2.4G WLAN Settings
SSID name: **2.4G WLAN**
SSID: **BasicRouter 2.4G**
Frequency: **2.4GHz**

[Advanced Settings](#) [Help](#)

1. ▶ Start the browser of your PC.
2. ▶ Enter `http://192.168.1.1` into the address box of the browser. Confirm with **[ENTER]**.
3. ▶ Enter the user name and the password and click **'Login'**. The preset user name and the preset password is **'admin'**.
⇒ The page **'Easy Setup'** opens.

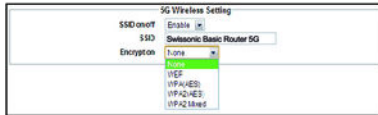


4. Select the access type to the network with 'WAN Access Type'.

Select 'Static IP' when your internet provider has provided a fixed IP address. Your internet provider will send you the values for 'IP Address', 'Subnet Mask' and 'DNS'.

DHCP (Dynamic Host Configuration Protocol) is a local network protocol. Select 'DHCP Client' for getting automatically a dynamic IP address from your internet provider.

PPPoE (Point-to-Point Protocol over Ethernet) is a virtual private protocol and allows encapsulated data transmission. Select 'PPPoE' if your internet provider offers this option. Your internet provider sends you the user name and the password.



5G Wireless Setting

SSID onoff: Enable

SSID: Swissonic Basic Router 5G

Encryption: None

Encryption options: None, WEP, WPA-PSK, WPA2-PSK, WPA2-TKIP



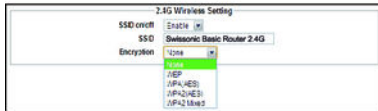
5G Wireless Setting

SSID onoff: Enable

SSID: Swissonic Basic Router 5G

Encryption: WPA2-PSK

Pre-Shared Key: 12345678



2.4G Wireless Setting

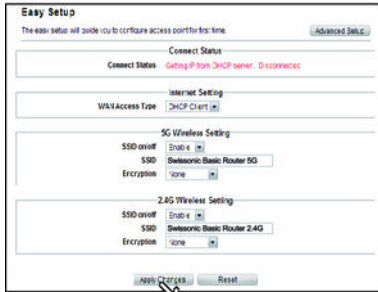
SSID onoff: Enable

SSID: Swissonic Basic Router 2.4G

Encryption: None

Encryption options: None, WEP, WPA-PSK, WPA2-PSK, WPA2-TKIP

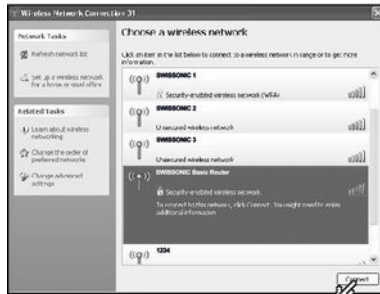
5. ➤ With '5G Wireless Setting' or '2.4G Wireless Setting' you can change the preset parameter for SSID and the encryption if needed.



Click

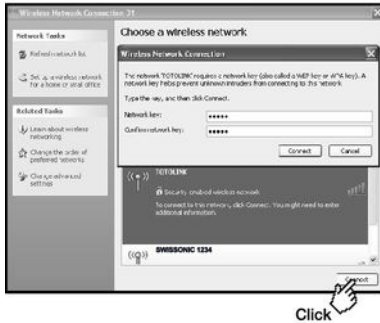
6. Click 'Apply Changes' to save the settings. Click 'Reset' to discard the changes and to return to the presets.

Establish WLAN connection



Click

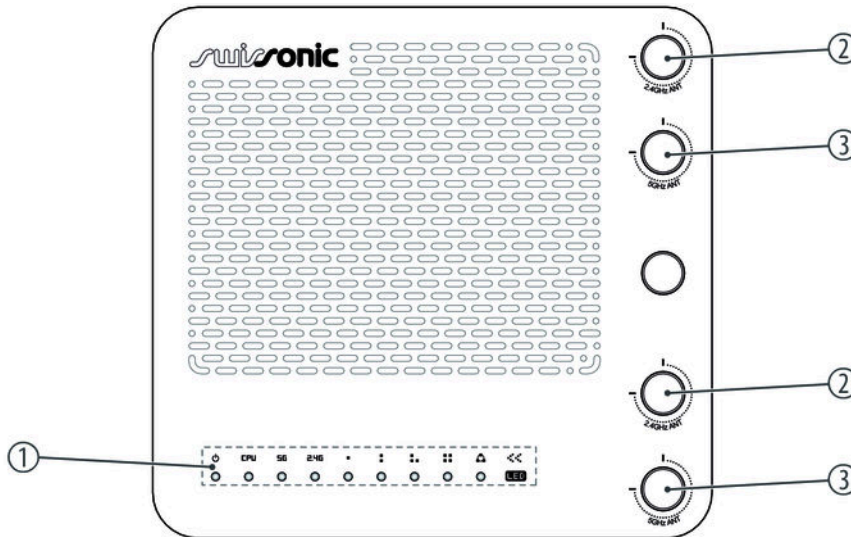
1. Click the button for networks in the task bar.
⇒ The available networks are displayed.




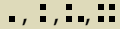

2. Select the network to which you want to connect. Enter the user name and the password and click 'Login'. The preset user name and the preset password is 'admin'.
⇒ The WLAN connection is establishing.

5 Connections and controls

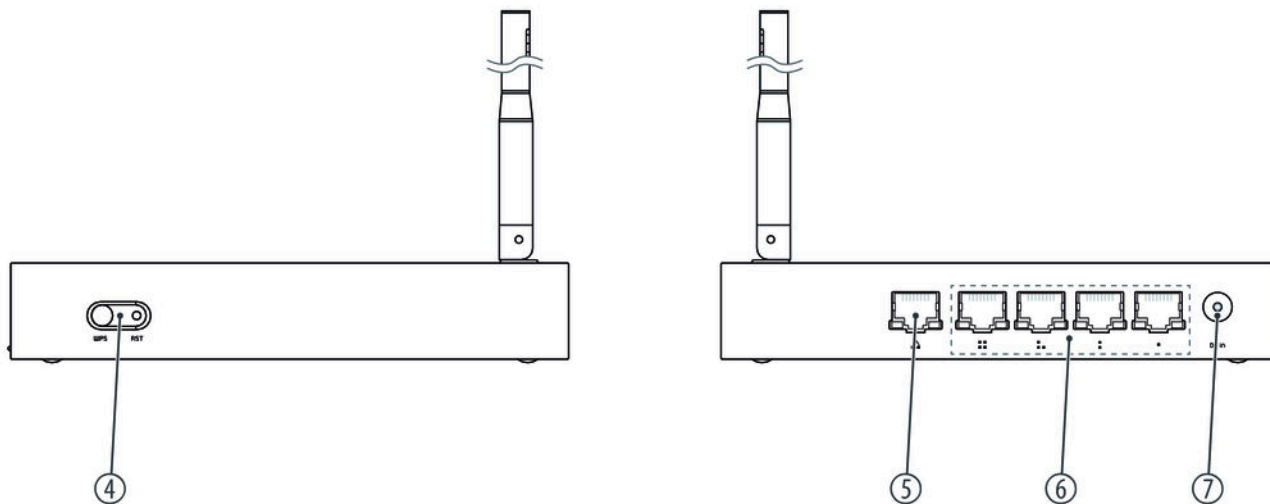
Front panel



Basic Router

1	LED indicator lights	
		illuminates as soon as the router is connected to the mains and ready for use.
	CPU	flashes as soon as the router is connected to the mains and ready for use.
	5G	flashes when there is a 5G Wi-Fi connection.
	2.4G	flashes when there is a 2.4G Wi-Fi connection.
		flashes when data is being transferred via the port.
		flashes when data is being transferred via the port.
2	2.4 GHz omnidirectional antenna	
3	5 GHz omnidirectional antenna	

Rear panel



Basic Router

4	<p><i>[WPS]</i></p> <p>Press <i>[WPS]</i> to add a new device to the wireless local area network.</p> <p><i>[RST]</i></p> <p>Press <i>[RST]</i> for more than 5 seconds to reset the device to factory settings. The reset button <i>[RST]</i> is located in a small recess and is accessible via a pointed object, e.g. a pen.</p>
5	WAN port for connecting to the internet
6	LAN port 1 ... 4 for connecting to local network devices.
7	Socket for connecting the plug-in power supply.

6 Cleaning

Clean the unit with a dry, soft, lint-free cloth. Stubborn dirt can be removed with a slightly dampened cloth.

Never use solvents or alcohol for cleaning.

7 Troubleshooting

In the following we list a few common problems that may occur during operation. We give you some suggestions for easy troubleshooting:

Symptom	Remedy
The LED ϕ does not light up.	Check that the device is connected to the power supply via the mains adapter.
Router is not connecting to the local network or the Internet.	Check if there is a DSL connection.

If the procedures recommended above do not succeed, please contact our Service Center. You can find the contact information at www.thomann.de.

8 Technical specifications

Power supply	Power adapter (9 V $\overline{\text{---}}$ / 0,8 A , positive centre)	
Dimensions (W × H × D)	135 mm × 23 mm × 127 mm	
Weight	200 g (incl. antennas)	
Ambient conditions	Temperature range	0 °C...40 °C
	Relative humidity	50 %, non condensing
IP address	192.168.1.1	
Default user name	admin	
Default password	admin	

Further information

Component type	Router
WLAN Standards	IEEE 802.11a, b, ac, g, n
Data throughput WLAN	Up to 300 Mbps (2.4 GHz), up to 867 Mbps (5 GHz)
Chipset	Realtek 8197DL + 8192ER + 8812AR

9 Protecting the environment

Disposal of the packaging material



For the transport and protective packaging, environmentally friendly materials have been chosen that can be supplied to normal recycling.

Ensure that plastic bags, packaging, etc. are properly disposed of.

Do not just dispose of these materials with your normal household waste, but make sure that they are collected for recycling. Please follow the notes and markings on the packaging.

Disposal of your old device



This product is subject to the European Waste Electrical and Electronic Equipment Directive (WEEE) in its currently valid version. Do not dispose with your normal household waste.

Dispose of this device through an approved waste disposal firm or through your local waste facility. When discarding the device, comply with the rules and regulations that apply in your country. If in doubt, consult your local waste disposal facility.

Basic Router



