



## E6 EARCLIP

TWO-EAR CLIP FOR E6 / E6i EARSETS

E6 EarSet sold separately.

The ideal complement to the Countryman E6 and E6i EarSet microphones, the EarClip provides comfortable, adjustable, extremely low-profile two-ear support.

Built of the same lightweight, incredibly durable materials used in our EarSets, the EarClip tolerates sweat, weather, and makeup, while virtually disappearing on stage. Much lighter than traditional headsets, it fits easily and holds securely without distracting performers.

### Applications

- A great choice anywhere EarSets or headsets are used, especially when performer movement demands exceptionally stability

### Style & Comfort

- Flexible, telescoping band fits snugly and comfortably around the back of the neck
- Easily concealed under the hair
- Over 4 inches of extension allows a quick, secure fit on children and adults
- Springy boom curves easily for a custom fit, and holds its shape for immediate, no-hassle use.

### Performance

- Used with the Countryman industry-leading omnidirectional and directional EarSet microphones
- Change performers or change microphones: clip in a directional or omnidirectional Countryman EarSet to respond instantly to any situation
- Close placement to the mouth ensures high rejection of feedback and unwanted sounds

### Colors :

Black or Tan

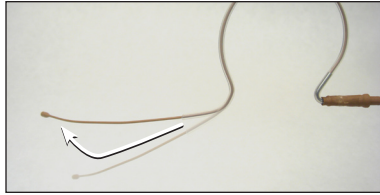
### Compatibility :

All E6 and E6i microphones, including omnidirectional and directional EarSets

### Weight:

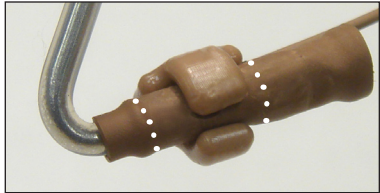
EarClip: 2.1 grams (0.075 oz)  
with EarSet: 4.1 grams (0.14 oz)

# EarClip: Fitting and Adjusting



## How do I fit the EarClip?

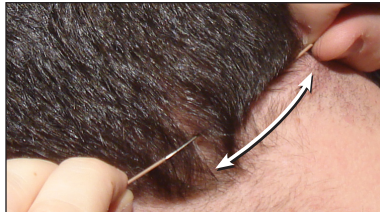
1. Gently slide your thumb and forefinger along the EarSet boom to bend it up as shown.



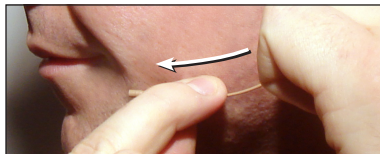
2. Clip the EarClip to the narrow middle section of the EarSet connector (indicated with dotted lines in the photograph).



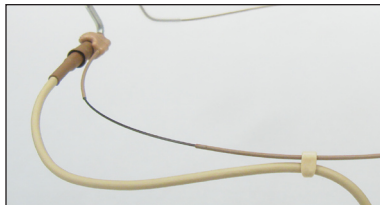
3. Grip the EarClip with both hands, slide it up under the hair and hook it over both ears.



4. Use both hands to tighten the boom until it feels comfortable and secure.

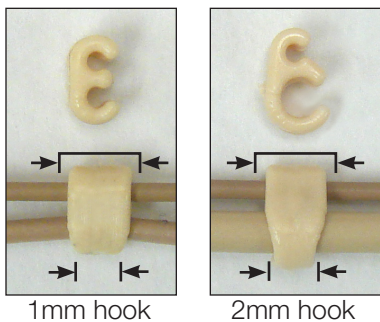


5. Pinch and hold the EarSet boom with one hand and curve it with the other thumb and forefinger to make small adjustments and position the microphone near the corner of the mouth. You may also use the same gentle bending motion to make small adjustments to the other side of the EarClip where it rests over the ear.



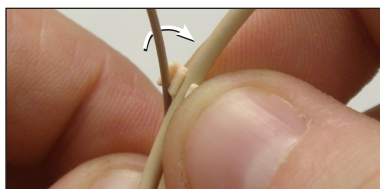
## How do I use the EarClip cable hooks?

The EarClip cable hooks attach to the back of the EarClip to position and secure the E6 Snap On cable. Although the hooks grip very firmly they will slide easily along the EarClip tubing for precise placement.



EarClip cable hooks come in 1mm (left photo) and 2mm (right photo) sizes to fit both diameters of Countryman E6 Snap On cables.

Each EarClip cable hook has a wide end and a tapered, narrower end. Clip the wider end to the EarClip tubing and the narrower end to the cable.



The EarClip cable hook is designed to grip the EarClip and cable very firmly to prevent accidental movement or removal. To remove the cable hook from the EarClip, or to remove the cable from the cable hook, gently twist as shown.